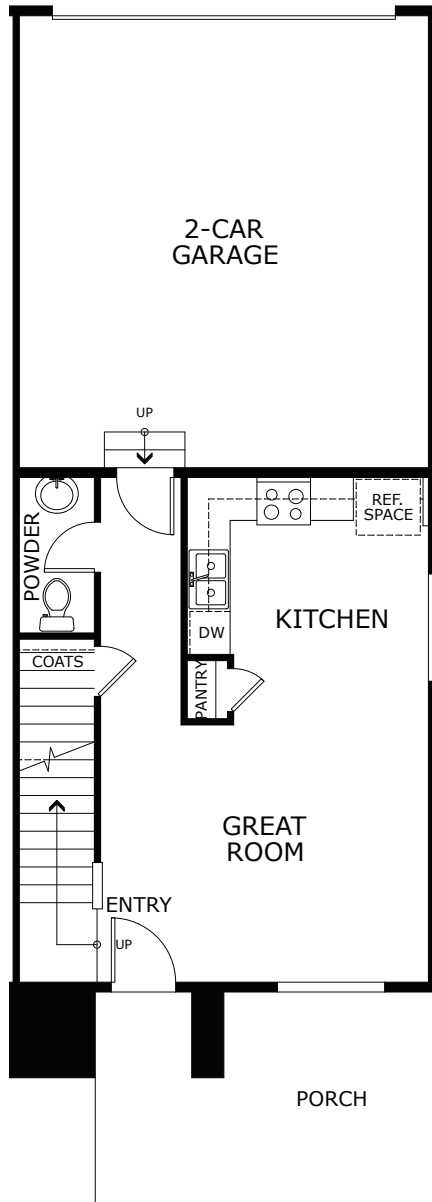


PINTAIL COMMONS

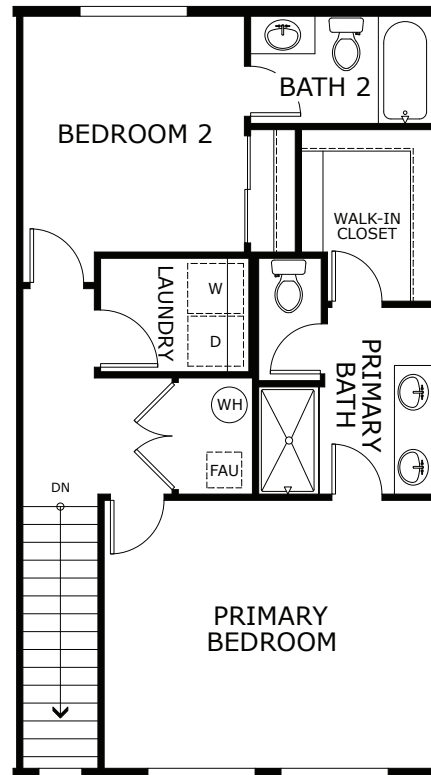
DENALI

1,159 Sq. Ft. • 2 Bedrooms • 2.5 Bathrooms • 2-Car Garage

FIRST FLOOR



SECOND FLOOR



2373 HARLEQUIN PLACE, JOHNSTOWN, CO 80534 | 888-827-4421

© 2024 Landsea Homes US Corporation. LANDSEA® and LIVE IN YOUR ELEMENT® are federally registered trademarks of Landsea. Plans, terms, pricing, square footage, product information, features, promotions, amenities and community/neighborhood information are subject to change without notice or obligation. Floor plans, renderings and site map are for representational purposes only, not to scale and subject to change. Some features and options shown may not be offered in your community. Square footage is approximate. Homes shown may not represent actual homesites. Models do not display racial preference. Please see the actual purchase agreement for additional information, disclosures and disclaimers relating to your home and its features. Individual energy costs and savings may vary. Landsea Homes does not guarantee any specific level of energy costs or savings. All rights reserved and strictly enforced. This is not an offering where prohibited by law. No information contained herein shall be deemed to constitute a representation or warranty of any kind. Please visit www.nfm lending.com/licensing. NFM, Inc.'s NMLS #2893 (www.nmlsconsumeraccess.org). NFM, Inc. is not affiliated with, or an agent or division of, a governmental agency or depository institution. Landsea Mortgage powered by NFM Tempe branch is located at 850 West Elliot Road, Suite 101, Tempe, AZ 85284. Branch NMLS #1490627. Branch licensing information: AZ 0121417. NFM, Inc. dba NFM Lending. NFM, Inc. is licensed by AZ #0934973; CO #2893 (dba NFM Consultants, Inc.). Copyright © 2024.

LANDSEA
HOMES
Live in your element®

PINTAIL COMMONS

DENALI

1,159 Sq. Ft. • 2 Bedrooms • 2.5 Bathrooms • 2-Car Garage

ELEVATION A



ELEVATION B



ELEVATION C



2373 HARLEQUIN PLACE, JOHNSTOWN, CO 80534 | 888-827-4421

© 2024 Landsea Homes US Corporation. LANDSEA® and LIVE IN YOUR ELEMENT® are federally registered trademarks of Landsea. Plans, terms, pricing, square footage, product information, features, promotions, amenities and community/neighborhood information are subject to change without notice or obligation. Floor plans, renderings and site map are for representational purposes only, not to scale and subject to change. Some features and options shown may not be offered in your community. Square footage is approximate. Homes shown may not represent actual homesites. Models do not display racial preference. Please see the actual purchase agreement for additional information, disclosures and disclaimers relating to your home and its features. Individual energy costs and savings may vary. Landsea Homes does not guarantee any specific level of energy costs or savings. All rights reserved and strictly enforced. This is not an offering where prohibited by law. No information contained herein shall be deemed to constitute a representation or warranty of any kind. Please consult a Landsea Homes sales representative for details. This is a co-marketing piece with Landsea Homes. Landsea Mortgage is a division of NFM, Inc. NFM, Inc. - NMLS #2893. NFM, Inc. is an equal housing lender. NFM, Inc. dba Landsea Mortgage has a financial relationship with the homebuilder Landsea Homes, and you may choose not to use NFM, Inc. dba Landsea Mortgage as your lender in connection with the purchase of a Landsea home. You are entitled to shop around for the best lender/real estate company for you. This is not a credit decision or a commitment to lend. Landsea Mortgage cannot predict where rates will be in the future. Make sure you understand the features associated with the loan program you choose and that it meets your unique financial needs. For full agency and state licensing information, please visit www.nfm lending.com/licensing. NFM, Inc.'s NMLS #2893 (www.nmlsconsumeraccess.org). NFM, Inc. is not affiliated with, or an agent or division of, a governmental agency or depository institution. Landsea Mortgage powered by NFM Tempe branch is located at 850 West Elliot Road, Suite 101, Tempe, AZ 85284. Branch NMLS #1490627. Branch licensing information: AZ 012147. NFM, Inc. dba NFM Lending. NFM, Inc. is licensed by AZ #0934973; CO #2893 (dba NFM Consultants, Inc.). Copyright © 2024.

LANDSEA[®]
HOMES
Live in your element[®]